

Users Guide



Micro-Trac

Transporter

Versie 0402 Micro-Trac English

Read and save this book !

Nothing from this document may be copied or printed or used in any other way without written permission from the manufacturer of NIMOS products.

Dealer	:	_____
Costumer	:	_____
Serial no.	:	_____

Introduction

In this operating manual we give you, the owner/user of the NIMOS transporter type Micro-Trac, the most important prescriptions with respect to operation and maintenance.



You are strongly advised to read this entire operation manual before using the MicroTrac for your own and others safety and the lifetime of your implement carrier.

Regarding safety rules we want to bring to your attention the chapters concerning safety, employment and maintenance.

You will understand that we can not be hold responsible for damage caused by improper or incompetent use, or when one does not follow the instructions of this manual.

***The NIMOS-machines are manufactured and designed to costumer specification.
Trough to this proces it is possible that some parts of the machine discription are not exact related to your machine.
You have to be aware of this. Your dealer can inform you what the differences are on your specific machine.***

The text below is used in this manual to warn you or to point at important matters.

 Danger!	This means risk or unsafe use that can course death or serious injury.
 Beware!	The user is reminded to problems that may course injury or damage tot the machine.

Index

1	Discription.....	5
1.1	GENERAL DISCRPTION	5
1.2	USERS CONDITIONS	5
1.3	TECHNICAL DATES.....	6
1.4	TYPE PLATE	6
2	Safety instructions	7
2.1	SAFETY FIRST:	7
2.2	SAFE OPERATION	7
2.3	SAFE MAINTENANCE	7
2.4	USE OF ENGINE HOOD	8
2.5	INSTRUCTION FOR EMERGENCY SITUATION	8
2.6	DESCRIPTION OF SIGNS.....	9
3	Operation controls.....	10
4	How to use your machine	11
4.1	STARTING.....	11
4.2	STOPPING	11
4.3	DRIVING	11
4.4	SPEED CONTROL:.....	11
4.5	BRAKE PADEL:	11
4.6	PARKING BRAKE:.....	11
4.7	DIFFERENTIAL LOCK:	12
4.8	LOAD.....	12
4.9	TIPPING.....	12
5	Implements	13
5.1	COUPLING	13
5.2	DECOUPLING	13
5.3	INSTRUCTIONS TOWING THE MACHINE.....	13
6	Maintenance	14
6.1	OVERALL MAINTANANCE INSTRUCTION	14
6.2	DAILY MAINTENANCE	14
6.3	CLEANING	14
6.4	MAINTENANCE DIAGRAM.....	15
6.5	INSTRUCTIONS FOR ADJUSTMENT.....	16
6.6	PARTS FOR MAINTENANCE	17
7	Attachment	18
7.1	HYDRAULIC DIAGRAM BASIC MACHINE.....	18
7.2	ELECTRICAL DIAGRAM (MACHINE) E-1.....	19
7.3	ELEKTRICAL DIAGRAM HONDA ENGINE E-2	20
7.4	ELECTRICAL DIAGRAM(YANMAR) E2.....	21

1 Discription

1.1 General discription

Producer of NIMOS products

DROST MACHINES B.V.

Postbus 96 3910 AB RHENEN - HOLLAND
Utrechtsestraatweg 204A 3911 TX RHENEN - HOLLAND
Tel: (31) (0)317 - 619017 Fax: (31) (0)317 – 614447 E-mail: info@nimos.nl

1.2 Users conditions

The NIMOS Micro-Trac is a transporter, which is specially developed for horticultures, public gardens, cemeteries and market-gardeners.

The answer of NIMOS for your transport problems: the **NIMOS Micro-Trac**, comfortable, good overlook, noiseless and very manoeuvrable.

Standard the Micro-Trac is equipped with progressive driving pedal.

Basically the Micro-Trac is equipped with an open control platform with extra low step and a three-side tipping loading platform.

Optionally the machine can be equipped with front lift, hydraulic PTO with different functions, etcetera.



Micro-Trac: high transport capacity in narrow areas combined to enlightening of the working circumstances.

The NIMOS Micro-Trac can be delivered with Two-cylinder-four stroke-gasoline engine, environment friendly, meets the newest Californian Emission-standard (CARB). Fully hydrostatic transmission with high and low speed with differential lock. Driving speed variable from 0 to 25 km/h. High load capacity: 1200 kg.

Your Micro-Trac Can be delivered with the following options

1. Low pressure tires with high flotation, especially for lawns.
2. Open control platform, second seat, top and cabin can be delivered.
3. Simple and light control.
4. Fully hydraulic steering.
5. Electrically controlled tipping platform;
6. PTO pump 21 l/min at 175 bar with quick couplings at the front and/or rear;
7. Front lift with single acting cylinder;
8. Double acting functions
9. Water installation;
10. Extra sides;
11. Trailer coupling;

For special wishes consult factory.

1.3 Technical dates

Type:	Micro-Trac		
Motor:	<ul style="list-style-type: none"> ○ Air cooled HONDA Gasoline engine GX620, 2-cilinder 14,9 kW (20 hp) at 3600 rpm, 44,1 Nm at 2500 rpm. ○ Liquid cooled Yanmar diesel engine 3TNE68 3600rpm 14,6kw(21,5hp) 		
Transmission:	Fully hydrostatic driven, with one pedal operation for forward and backward driving automatically control of engine Rpm		
Brake system:	<ul style="list-style-type: none"> ○ Brakes: hydrostatic en disk brake. ○ Parking brake: disk brake. 		
Speed:	High speed: 0-25 km/h Low speed: 0-13 km/h		
Pumps:	Hydraulics of the charging pump of the hydrostatic transmission hydrostatic transmission. Optional: extra PTO-pomp (5,8 cc. - 21 l/min at 3600 rpm.)		
Steering:	Hydraulics.		
Steering circel:	Outer diameter 2050 mm Inner diameter 680 mm		
Tyres:	Front: 18x 9.50- 4ply. Back: 23x10.50- 4ply.		
Tyre pressure:		<u>front</u>	<u>back</u>
	- minimum	1,0 bar	1,0 bar
	- small load	1,0 bar	1,2 bar
	- heavy load	1,0 bar	1,4 bar
Cabin:	Control platform: open control platform with spring seat, weight adjustable. Cabin with roof and front window, doors and heating optional.		
Dimensions:	- length	2900 mm	
	- wide	1180 mm	
	- height	1440 mm	
Loading floor:(inner space)	- length	1560 mm	
	- wide	1100 mm	
	- height	300 mm	
Tipping unit capacity:	0,52 m ³		
Wheel base:	1500 mm		
Track wide:	845 mm		
Total weight:	1700 kg		
Loading capacity:	1000 kg		
Machine weight:	700 kg (standard)		

1.4 Type plate

NIMOS
DROST MACHINES B.V.
UTRECHTSE STRAATWEG 204^B - 3911 TK RIJNEN HOLLAND
TEL 0317 - 61 9017 TELEFAX 0317 - 61 4447

Goedkeuringsnummer

Ident. nr.

Type Maximum massa kg

Bouwjaar Max. aslast voor kg

Eigen massa kg Max. aslast achter kg

Nom. vermogen kW Max. kcpp. druk kg

Ident. nr.: serial number;
Type: type;
Bouwjaar: year of production;
Eigen massa: netto weight;
Nom. vermogen: maximum power;
Maximum massa: total weight;
Max. aslast voor: weight front axle;
Max. aslast achter: weight rear axle.

2 Safety instructions

2.1 Safety first:

- WARNING!** Hazards or unsafe use which COULD result in death or severe personal injury.
- CAUTION!** Hazards or unsafe use which COULD result in minor personal injury or damage to the machine.
- IMPORTANT!** Indicates that equipment or property damage could result if instructions are not followed.
- NOTE!** Gives helpful information.

2.2 Safe operation

IMPORTANT! The responsibility for changes, respectively modifications of the machine is not for the producer, but for the one who has carried them out.

- Persons younger than 18 years, are not allowed to use the machine (according to country regulations).
- Maintenance and cleaning is only permitted, when the engine is not running.
- When leaving the cabin, one always needs to turn off the engine, engage the parking brake and take the keys from the ignition lock.
- Before coupling implements, one has to consult the coupling and operation instructions.
- Take care that there are no people in the direct neighbourhood of the machine when tipping the platform and steering with the carrier.
- The maximal allowed transverse slope during operation of the machine is 15 degrees in both directions.
- The driver needs to be well-informed about the operating and maintenance instructions of the machine.
- Transport of passengers and animals in the tipping platform is prohibited.

☞ **WARNING!** One **always** needs to set the red safety leg during inspection, maintenance or repair under the tipped platform to protect the platform against coming down.

2.3 Safe Maintenance

- For the user of the machine it is only allowed to do daily maintenance. All the other services have to be done by an authorised NIMOS dealer.
- Service and maintenance is only safe when the engine is not running and the parking brake is on. When maintaining the driving system the front and back tyres have to be blocked to prevent the machine from rolling.
- Spare parts must have the same specifications as delivered by NIMOS.
- In the engine compartment are several dangerous parts. Such as the, the radiator, the exhaust pipe. The Fan of the cooling can run without notice. This can cause serious injury.
- For maintenance it best to wait until the machine parts are cooled down.
- Never use bare hands to close or prevent hoses from leaking. The pressure of the hydraulic system can cause serious injury.
- Repairs on battery are not allowed. Keep away from fire or smoking.
- Only let the machine running when the area has good ventilation.
- Always use the red safety pin with maintenance under the tipping box.



2.4 Use of engine hood

Caution! When closing the engine hood.

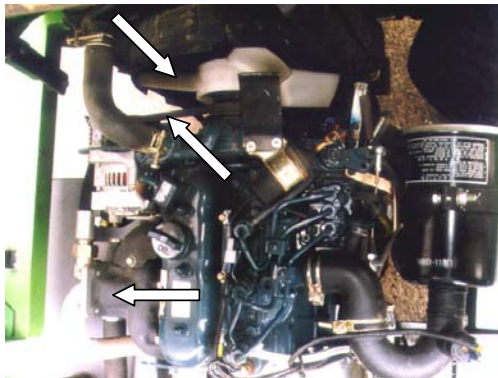
- Make sure the clamps are secure before driving .
- When opening the hood use safety pin to block the cylinder.



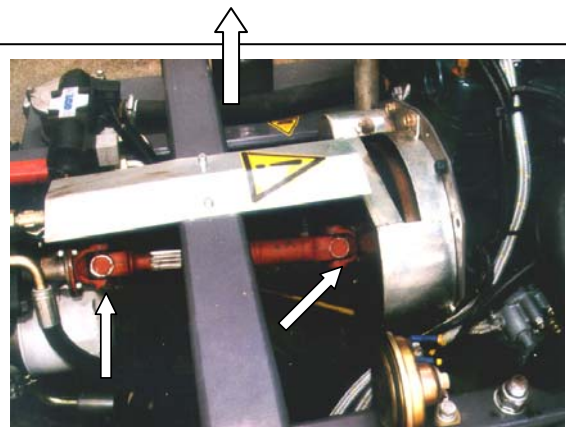
2.5 Instruction for emergency situation

Danger ! When the vehicle is about to tip over always stay on the seat and hold yourself to the steering wheel. Jumping of when tipping over can cause serious injury

Caution ! When the safety cage of the cabin is damaged it has to be inspected by an authorised NIMOS dealer or consult the factory..



Hot engine parts



Beware rotating parts

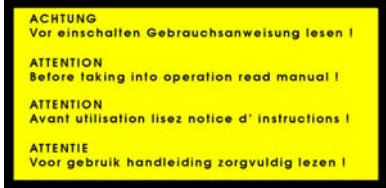







Danger jamming



Place red safety pin

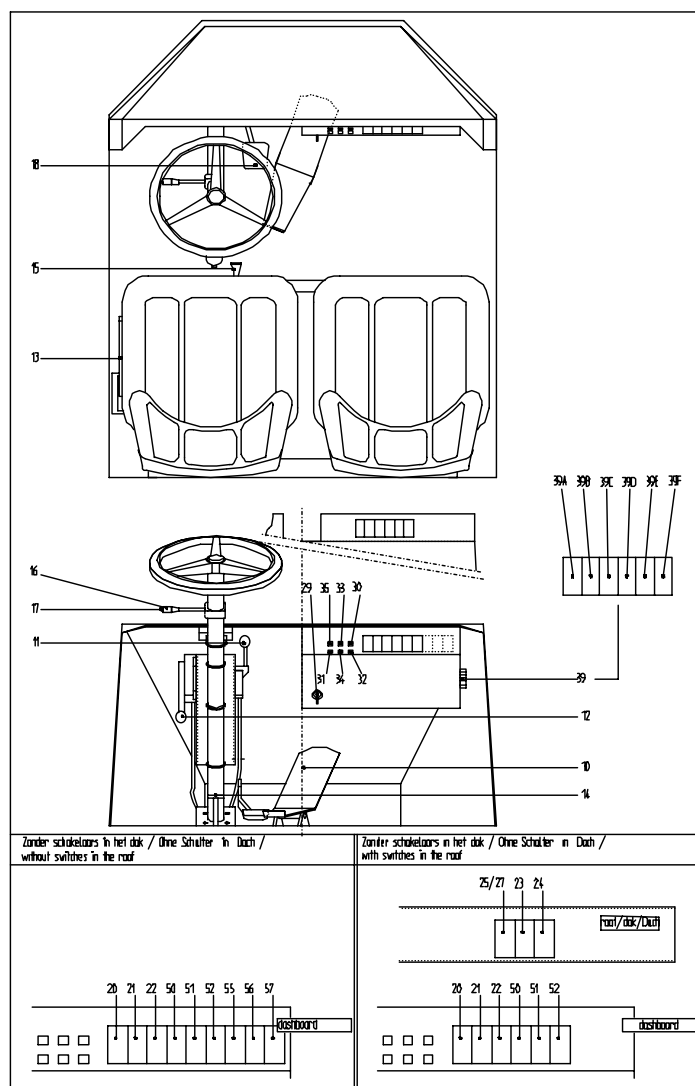
2.6 Description of signs

	meaning	Where to find
 <p> ACHTUNG Vor einschalten Gebrauchsanweisung lesen ! ATTENTION Before taking into operation read manual ! ATTENTION Avant utilisation lisez notice d' instructions ! ATTENTIE Voor gebruik handleiding zorgvuldig lezen ! </p>	Attention Before using the machine read manual	On drivers platform
	Danger During filling reservoirs smoking or open fire is not allowed.	On filler cap of reservoir.
	Warning Passenger transport prohibited	On the back of the machine.
	Caution ! Hot parts	On different parts in the machine
	Keep away from rotating parts when the machine is running	Drive shaft and belts
 <p> Gevaar voor zakkende delen, eerst steun plaatsen </p>	Warning! When platform is tipped place the red safety pin.	Under the tippingbox

3 Operation controls

Nr. Description.

- 10. Drive pedal (forward/rearward)and speed control
- 11. Throttle lever36-9211
- 12. Lever high and low gearingdrawing
- 13. Parking brake70-0371
- 14. Differential lock pedaldrawing
- 15. Choke-button36-9134
- 16. Switch direction indicator35-2215
- 17. Switch horn35-2215
- 18. Brake pedal
- 20. Switch lighting35-6404
- 21. Switch alarm35-6418
- 22. Switch tipping platform35-6420
- 23. Switch windscreen wiper35-6402
- 24. Switch windscreen washer35-6422
- 25. Switch rotary beacon35-6418
- 26. Switch blower35-6418
- 27. Switch work lamp35-6418
- 29. Starting switch (key)^b35-2242
- 30. Maximum engine temperature
- 31. Air filter Renew air filter and reset the switch.
- 32. Charging current No charging current. Stop machine.
- 33. Fuel Little fuel in the tank: fill tank.
- 34. Oil pressure.
- 35. Glowing Cold engine pre-heats till the lamp goes out.
- 36. Control lamp direction indicator.
- 39. Fusebox35-2247
- 39A. 10A (hydraulic)35-2241
- 39B. 10A (horn and rearward driving light)35-2241
- 39C. 10A (windscreen wiper and blower)35-2241
- 39D. 10A (direction indicators, radio)35-2241
- 39E. 10A (lighting R.)35-2221
- 39F. 10A (lighting L.)35-2241
- 50. Switch hydraulic PTO (SA/front)35-6418
- 51. Switch hydraulic DA (front)35-6422
- 52. Switch hydraulic front lift (SA)35-6420
- 55. Switch hydraulic PTO (SA/rear)35-6418
- 56. Switch hydraulic DA (rear)35-6422
- 57. Switch hydraulic rear lift (SA)35-6420



4 How to use your machine

4.1 Starting

- Switch all hydraulic functions (switches 20 to 23, 44 to 45) off, move the speed control pedal (10) to the neutral position and engage the parking brake (13).
- Read also the operation manual engine for further instructions.
- Check if the warning lamps of the charging current (32) and the oil pressure (34) light when you turn the key (29) to ON position and the engine doesn't run.
- **GASOLINE:** Move throttle lever (11) to medium position, and pull choke out if starting a cold engine and start the engine. Push choke in immediately after starting.
- **DIESEL:** Move throttle lever (11) to medium position, turn key to PRE-HEAT position and hold until lamp (35) goes out and start the engine.
- Allow engine and hydraulic oil to warm up for a few minutes with throttle lever in medium position. Move all cylinders totally in and out before you go driving.



NOTE! Let the engine run after **heavy load** to cool the machine.

4.2 Stopping

- Switch all hydraulic functions off, engage the parking brake, shut off the engine and remove the key.

4.3 Driving

Shifting high and low gearing

Low gearing: press the lever (12) to the left and move it into the lowest position. Use this gearing for driving over beaten roads and with light load.

Low gearing: press lever (12) to the left and move it into the upper position. Use this gearing for off-road driving, on slopes and at heavy load or with trailer.

Neutral position: when lever (12) is in the medium position, the transmission is shifted neutral. The **hydrostatic driving** and **braking don't** function.



IMPORTANT!

Don't change gears during **driving**. When shifting, move the lever **cautiously** in the **outmost** position. When the lever is not well engaged, it can move to neutral position, so the hydrostatic driving and braking will not function!

4.4 Speed control:

With the drive pedal (10) you control the driving speed together with the revolutions of the engine. Forward kicking moves the machine forward. Backward kicking moves the transporter backward. In the neutral position the machine brakes (working brake).

4.5 Brake pedal:

Use the brake pedal (18) to stop the machine in a short time. This brake is emergency brake if the hydraulics should fail.

4.6 Parking brake:

Press the brake pedal (18) full down and move the lever of the parking brake (13) down, so that the pedal is set in the lower position. To disengage the parking brake, press the brake pedal (18) full down and move the lever of the parking brake (13) upward.

4.7 Differential lock:

The differential lock can be shifted during driving by kicking the pedal (14) in with your left heel. Use this when one of the rear wheels is slipping or blocking.



IMPORTANT! Don't steer your transporter while using the differential lock.

- The danger zone must be well survey able for the driver all the time. For good view, it is necessary that windows and mirrors are clean and that the mirrors are well adjusted.
- If machine stops going uphill, disengage PTO (attachments drive) and backup slowly. Look behind you before backing up.



CAUTION!

The maximal allowed transverse slope during operation of the machine is 15% in both directions.

4.8 Load

On the type print you find the masses and allowed loads of your transporter. Take care that the maximum load is not exceeded.

Spread the load equally in the platform and close all sides after loading. Ensure all sides are closed before driving. Take care that during transport no load drops from the platform.



CAUTION!

When tipping, one has to take care that there are no persons in the direct neighbourhood of the platform, because there exists a danger of jamming during lowering the platform.

4.9 Tipping

Place the transporter on a **flat** and **solid** underground and check if the pins are put in at the good side of the platform. Open the side before tipping.

Let the tipping platform lower before driving and shift the tipping switch (22) after lowering the platform in the neutral position.



WARNING!

Never tip sideways when **extra sides** mounted!

5 Implements

Before (de)coupling: stop the machine and disengage all **hydraulic functions** (switches 22 and 50 to 57). **Engage the parking brake**. Read the manual of the implement carefully.

5.1 Coupling

➤ Check if coupled implements don't endanger the stability of the machine. Here you will find the maximum weights and dimensions:

	front lift	rear lift
distance centre of gravity to centre front axle:	1000 mm.	rear axle: 850 mm.
max. weight of implement	150 kg.	200 kg.

- Extra implement pump supply's 21l.min at 3600 Rpm with 175 bar of pressure
always check the required power of the implement
- Bolt all pins and strips after coupling implements.
- Clean dirty quick couplings before coupling.
- Couple the lift cylinder to the Single Acting quick coupling (H).
- Couple the swivel cylinder to the Double Acting quick coupling (DW / two couplings).
- Couple the working hydraulics to the working quick couplings (EW / two couplings).
- Lower coupled implements when you stop the transporter.



IMPORTANT! Don't tip the platform backward when the rear lift is mounted!

5.2 Decoupling

- Place the implement on a **flat** and **solid** underground.
- Decouple all hydraulic hoses.
- Put protection caps and plugs in when the implements are decoupled.
- Disconnect all pins and strips.

5.3 Instructions towing the machine

- Shift the reduction in the rear axle in the neutral position (high/low gearing) (lever 12).
- Use the parking brake (13) when you must stop.
- Maximum speed at towing is 3 km/h.

6 Maintenance


6.1 Overall maintenance

If you maintain your machine in the proper way, it will be your help during a long life. Good maintenance spares you costs of service and stagnation.

The maintenance intervals are mentioned in the chapter "Maintenance diagram". The items which have to be carried out at every 10 and 50 hours, can be done by the driver (column 1 and 2). Remaining maintenance can be done by an authorized fitter/NIMOS-dealer.

Contact your NIMOS- or engine dealer when you have troubles and need servicing, when you order parts, or if you have any questions.

- Maintenance and cleaning is only permitted, when the engine is not running.
- The responsibility for changes, respectively modifications of the machine is not for the producer, but for the one who has carried them out.

 **Danger!** Always place the red safety pole during inspection, maintenance or repairs under the tipped platform to prevent the platform from coming down.

- Tools are not allowed to remain in or on top of the machine. This may cause lasting damage to the machine or be a danger to persons in the direct neighbourhood during start up.
- The fitter needs to be well-informed about the operating and maintenance instructions of the machine.
- Clean dirty quick couplings (hydraulics) and renew damaged or worn hoses.
- **Always** use the instruction of the engine when you maintain the engine.

6.2 Daily Maintenance

Check on daily basis, before driving, the points below:

- Engine oil;
- Hydraulic oil;
- Fuel level;
- Koolant;
- Damages on hoses;
- koolingribs radiator en oilkooler;
- Air filter;
- Damages on parts of the machine;
- Tire tension;
- Lighting.



 **Beware! Check level of hydraulic oil with tipping cilinder down**

6.3 Cleaning

Shut down the engine and engage the parking brake. Take loose parts from the machine.

Mind cooling ribs of the engine, hydrostatic transmission and oil cooler (option). Clean mentioned parts carefully.

 **IMPORTANT!** Never clean the ribs of cooler with water always use air cleaning in opposite direction.

6.4 Maintenance diagram

Note! Maintenance can be carried out by: Driver 50 our interval
Other interval by authorised NIMOS dealer

Frequency	First	Every			Every
	10 hours	50 ^M hours	250 hours	500 ^Y hours	5 years
fuel tank				C	
hydraulic oil tank / level	V	V			
Battery liquid	V	V			
parking brake	V	V			
Neutral position transmission	V	V			
lighting	V	V			
instrument panel	V	V			
tire pressure	V	V			
hydraulic hoses (damage/leakage)	V	V			R
clearance pivot frame (under steering platform) and wheel bearings		V			
Tighten wheel nuts	V				
hydraulic system	V				
Suction filter hydrostatic transmission			R ^Y		
Suction filter gear pump ^e			C	R	
return flow filter element			R		
filling cap hydraulic tank			R		
hydraulic oil				R	
Driving pedal (1)		G			
propel shaft (1)		G			
ball joints tipping platform (4)		G			
Tipping cylinder mounting (5)		G			
hinge bonnet (2)		G			
hinge cabin doors (4)		G			

DIESELMOTOR Yanmar 3TNE68 (Always use manual of manufacturer)

Frequency	1st Service						
	50 our	100 ^{3M} our	200 ^{6M} our	400 ^J our	500 our	800 our	1000 our
Motor oil	V		V				
V-belt	C		C		V		
oil filter	V		V				
Fuel filter				V			
Air filter	Clean with every service interval						
Radiator			R				
cooling system	C		C				
Valve clearance							C
Nozzles							C
Radiator hoses and fuel hoses							V

Gasoline engine (follow the instructions of the manual of the engine when you carry out maintenance to the engine)

HONDA Frequency	First		Every	
	25 hours	50 ^{3M} hours	100 ^{6M} hours	200 ^Y hours
engine oil	R		R	
air filter		C		R
oil filter				R
fuel filter				R
cooling system		C		
spark plugs				V

^Mminimal every month

^{3M}minimal every three months

^{6M}minimal every six months

^Yminimal every year

C = cleaning

V = check

R = renew

G = grease

^e = Option;

6.5 Instructions for adjustment

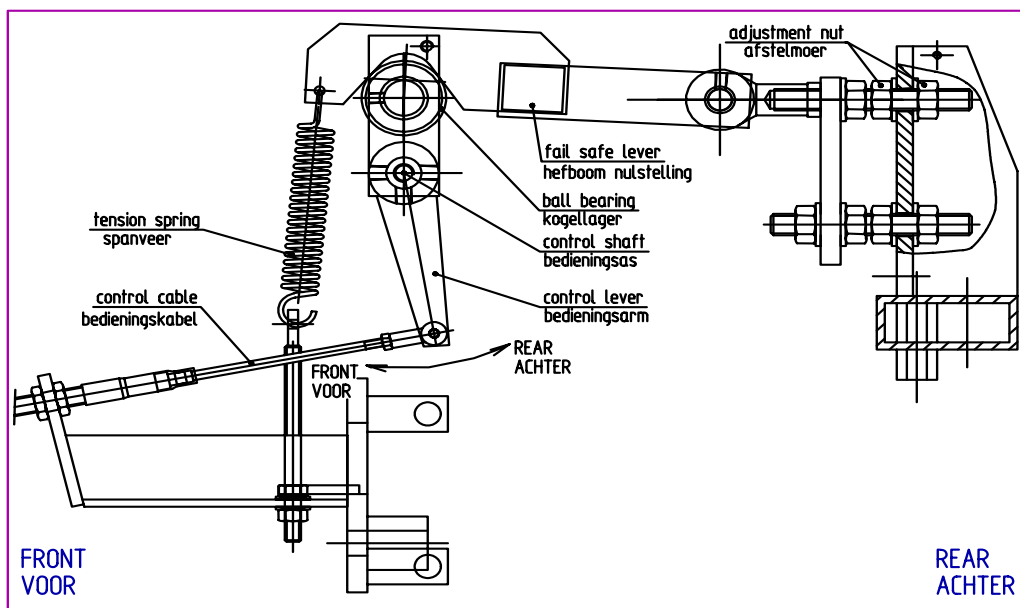
Bolts must be tightened with the following **tighten torques**:

Function	Torque	Bolt	Quality
Front wheels	117 Nm	M12	10.9
Rear wheels	125 Nm	M14	8.8
Pivot frame	280 Nm	M16	10.9

Neutral position hydrostatic transmission: engage the parking brake and let the engine run. When you hear the oil flow through the over-pressure valves (high sound), the neutral position doesn't function well.

Adjust the nuts at the stud on the cross-beam rear till you don't hear the above mentioned sound. Be sure the nuts are tightened well to lock the setting.

When the machine drives forward, lengthen the screw thread. When the machine drives rear: shorten the screw thread.



6.6 Parts for Maintenance

	Volume [L]	Description
Motor oil	Engine manual	15 W40
Cooling liquid	Engine manual	Engine manual
Fuel	22,5	gasoline engine: Unleaded diesengine: diesel
Hydraulic fluid	12 with reservoir 45	Discription of oil on filler cap o standard Total Equivis ZS 46 o Biological-oil: Total Hydro-bio 46 or Shell Naturelle HF-E 46
Grease		Multi Grease class 2 (DIN 51818)

G=Gasoline engine,

D=Diesel engine.

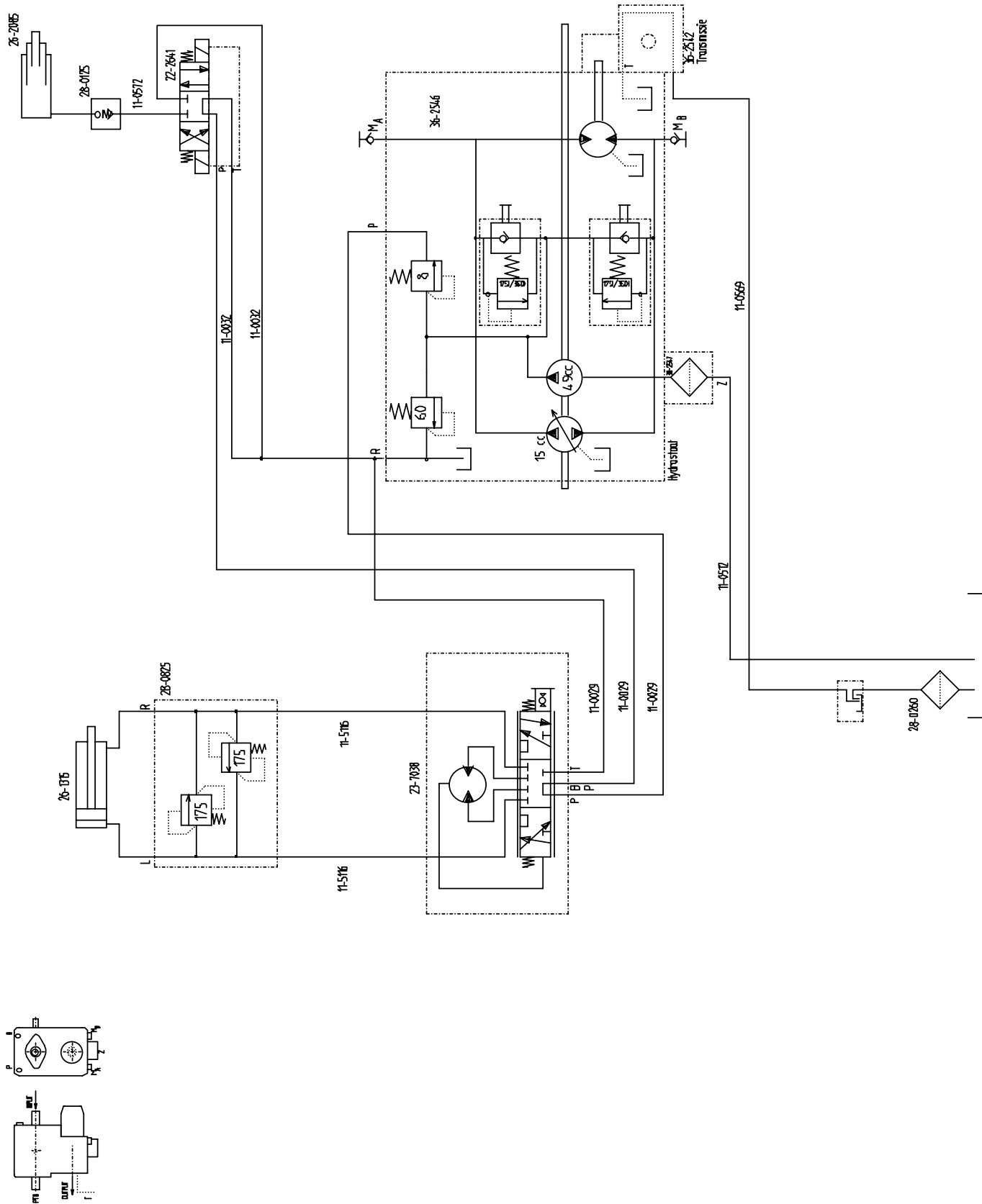
⚠ Beware! Never use different type of oil together

Part description		Yanmar	LDW 702	Kubota 722	HONDA
Engine oil filter	1	20-0917	20-0906	20-0915	20-0913
Air filter element	1	20-0640	20-0630	20-0631	20-0651 (big filter) 20-0654 (small filter)
Fuel filter element	1	20-1220	20-1206	20-1218	20-1224
V-belt	1	20-1554	20-1512	20-1511	
Distribution belt	1		20-1540		
Suction filter driving pump	1	08-1897			
Suction filter	1	08-1803			
Return filter element (hydraulics)	1	08-1830			

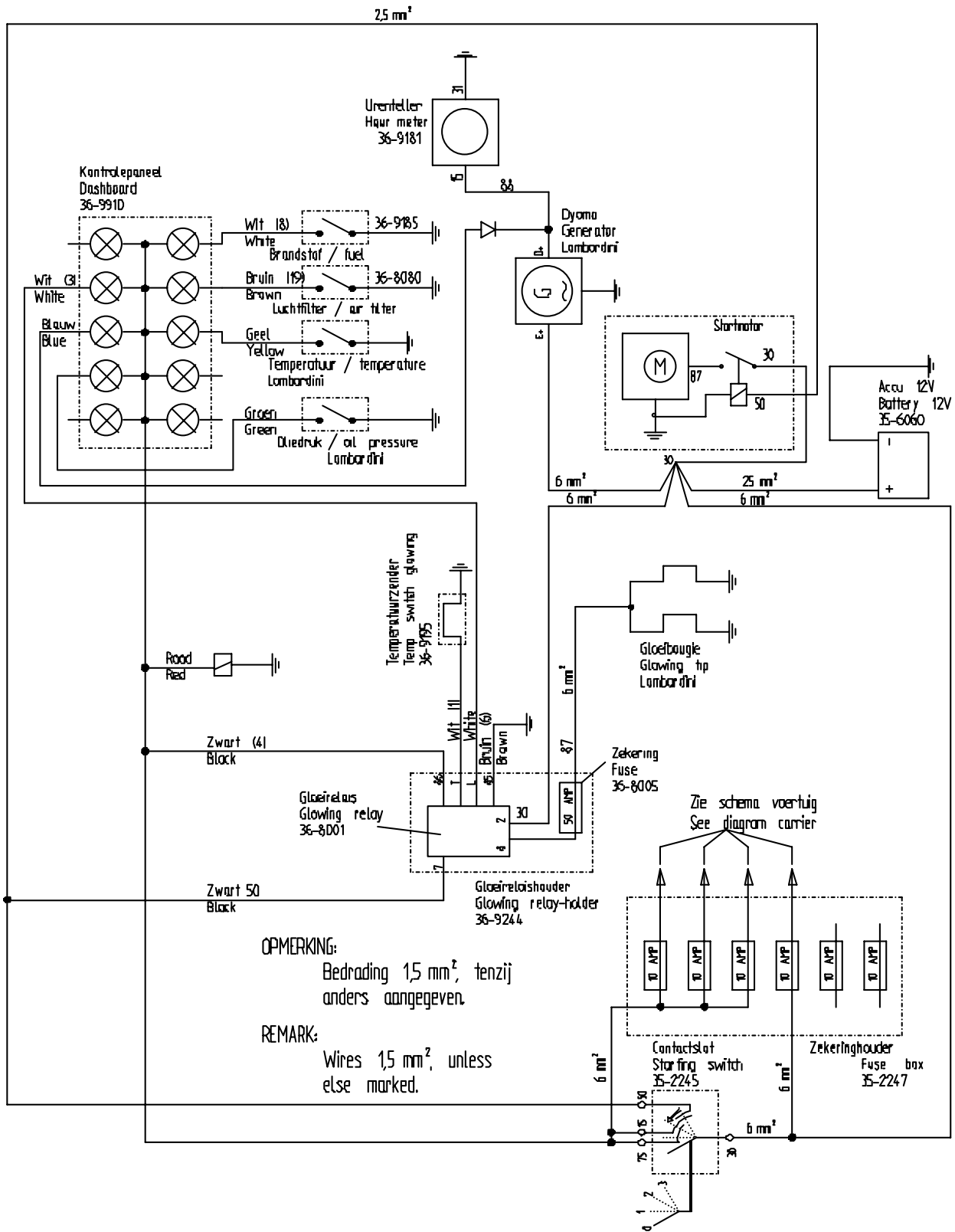
Verstelling neutraalstelling

7 Attachment

7.1 Hydraulic diagram basic machine



7.4 Electrical diagram(Yanmar) E2



St.	Omschrijving	Discription	Gegenstand	Bestelnr.
	Chassis	Chassis	Fahrgestell	
1	benzinemotor	Gasoline engine	Benzinmotor	36-8067
1	uitlaatdemper benzine	Silencer petrol	Schalldämpfer Benzin	tek. 233
0,5	flex. uitlaotp. benzine	Flex exhaust	biegsames Rohr Benzin	70-1332
1	dieselmotor	Diesel engine	Dieselmotor	70-0375
1	uitlaatdemper diesel	Silencer diesel	Schalldämpfer Diesel	tek. 265
0,5	flex. uitlaotp. diesel	Flex exhaust Diesel	biegsames Rohr Diesel	36-8046
1	aandrijfjas	Drive shaft	Gelenkwelle	70-0315
4	trillingsdemper		Rundpuffer	36-9336
1	flens aandrijfjas ø25,4	Flange driveshaft 25,4	Flansch Gelenkwelle ø25,4	70-0312
1	flens aandrijfjas ø15,8	Flange driveshaft 25,4	Flansch Gelenkwelle ø15,8	70-0313
	flens aandrijfjas dieselmotor	Flange diesel	Flansch Gelenkwelle Dieselmotor	tek. 265
1	hydrostaat	Hydrostat	hydraulisches Getriebe	36-2546
1	transmissie	Transaxle	Getriebe Hinterachse	35-2542
2	centreerring	Shim	Zentrierring	36-2548
2	steekas		Achsenende	36-2543
1	konisch tandwiel	Pivot	Kegelzahnrad	36-2544
1	trompet R		Trompete R	tek. 185R
1	trompet L		Trompete L	tek. 185L
2	Wielnaaf	Wielflange	Radnabe	tek. 175
2	V-ring		V-ring	70-0337
1	remschijf		Bremsscheibe	tek. 170
1	schijfrem	Diskbrake	Scheibenbremse	70-0317
2	wiel 18x9,50-8 6PR ST	Wheel 18x9.5-8 6PR	Rad 18x9,50-8 6PR ST	36-0053
2	wiel 23x10,50-12 6PR ST	Wheel 23*10,50-12 6PR	Rad 23x10,50-12 6PR ST	36-0054
2	trekveer nulstelling/rem	Spring neutral system	Zugfeder Neutralstellung/Bremse	36-5024
1	kogellager nulstelling	Bearing neutral system	Kugellager Neutralstellung	39-5120
1	stangkop M12		Gelenkköpfe M12	70-1487
1	moer M18x1,5 R (spoorstang)		Mutter M18x1,5 R (Spurstange)	45-3252
1	moer M18x1,5 L (spoorstang)		Mutter M18x1,5 L (Spurstange)	45-3253
1	spoorstang		Spurstange	tek. 122
1	stuurkogel R		Kugelgelenk R	70-1410
1	stuurkogel L		Kugelgelenk L	70-1411
1	teleskoopcilinder	Cylinder	Teleskopzylinder	26-2085
1	cardanring	Carden ring	Kardanring	26-4000

St.	Omschrijving	Discription	Gegenstand	Bestelnr.
	Bediening		Bedienung	
1	Stuurstang		Lenksäule	23-2510
1	stuurwiel		Lenkrad	36-7600
1	afdekplaat stuurwiel		Abdeckplatte Lenkrad	36-7601
1	stuurknop		Drehknauf	36-7605
1	transparante beschermkap 6-D		transparante Schutzkappe 6-T	35-6446
1	geveerde stoel		gefederte Stuhl	36-9162
2	motorkapsluiting		Haubenhalter	41-4078
1	gasveer motorkap		Gasfeder Motorhaube	36-9654
1	handgreep bijrijder		Handgriff Beifahrer	36-9664
1	trekveer handremhendel		Zugfeder Feststellbremse	36-0200
1	rubber rempedaal		Gummikappe Bremspedal	36-9132
1	choke kabel		Seil Drosselklappe	36-9134
1	gaskabel		Seil Motorendrehzahl	36-9140
1	sperkabel		Seil Differentialsperre	36-9140
1	handremkabel		Seil Handfeststellbremse	36-9210
1	remkabel		Seil Fußbremse	36-9508
1	rijkabel		Seil Fahren	36-9507
1	kabel hoog-laag		Seil Schnell- /Langsamgang	36-9220
2	vuldop		Füllschraube	28-0455
1	peilglas		Standglas	28-0405
1	brandstofniveaugever		Kraftstoffstandgeber	36-9185
3	klepsluiting R		Bordwandverschluß R	36-0121
3	klepsluiting L		Bordwandverschluß L	36-0120
4	rondop		Rungskappe	62-4180
2	klepkabel		Bordwandkabel	36-6012
	Stickers		Aufkleber	
1	sticker dash-board benzine		Aufkleber Armaturenbrett Benzin	57-5465
1	sticker dash-board diesel		Aufkleber Armaturenbrett Diesel	57-5460
2	sticker meerrijverbod		Aufkleber Mitfahrverbot	57-5470
1	sticker open vuur verboden		Aufkleber offenes Feuer verboden	57-5471
2	sticker hete delen		Aufkleber heiße Gegenstände	57-5473
2	sticker draaiende delen		Aufkleber drehende Gegenstände	57-5474
1	sticker uitzetijzer		Aufkleber Stütze anbringen	57-5479
1	sticker gebruiksaanwijzing lezen		Aufkleber Betriebsanleitung lesen	57-5477

10 Stunden



50 Stunden



100 Stunden oder 3 Monate



Datum:

Datum:

Datum:

Stundenstand:.....

Stundenstand:.....

Stundenstand:.....

Name:

Name:

Name:

Beschreibung:

200 Stunden oder 6 Monate



Beschreibung:

250 Stunden



Beschreibung:

400 Stunden



Datum:

Datum:

Datum:

Stundenstand:.....

Stundenstand:.....

Stundenstand:.....

Name:

Name:

Name:

Beschreibung:

500 Stunden o. 1x pro Jahr



Beschreibung:

800 Stunden



Beschreibung:

1000 Stunden



Datum:

Datum:

Datum:

Stundenstand:.....

Stundenstand:.....

Stundenstand:.....

Name:

Name:

Name:

Beschreibung:

..... Stunden



Beschreibung:

..... Stunden



Beschreibung:

..... Stunden



Datum:

Datum:

Datum:

Stundenstand:.....

Stundenstand:.....

Stundenstand:.....

Name:

Name:

Name:

Beschreibung:

..... Stunden



Beschreibung:

..... Stunden



Beschreibung:

..... Stunden



Datum:

Datum:

Datum:

Stundenstand:.....

Stundenstand:.....

Stundenstand:.....

Name:

Name:

Name:

Beschreibung:

..... Stunden



Beschreibung:

..... Stunden



Beschreibung:

..... Stunden



Datum:

Datum:

Datum:

Stundenstand:.....

Stundenstand:.....

Stundenstand:.....

Name:

Name:

Name:

Beschreibung:

..... Stunden



Beschreibung:

..... Stunden



Beschreibung:

..... Stunden



Datum:

Datum:

Datum:

Stundenstand:.....

Stundenstand:.....

Stundenstand:.....

Name:

Name:

Name:

Beschreibung:

..... Stunden



Beschreibung:

..... Stunden



Beschreibung:

..... Stunden



Datum:

Datum:

Datum:

Stundenstand:.....

Stundenstand:.....

Stundenstand:.....

Name:

Name:

Name:

Beschreibung:

Beschreibung:

Beschreibung:

